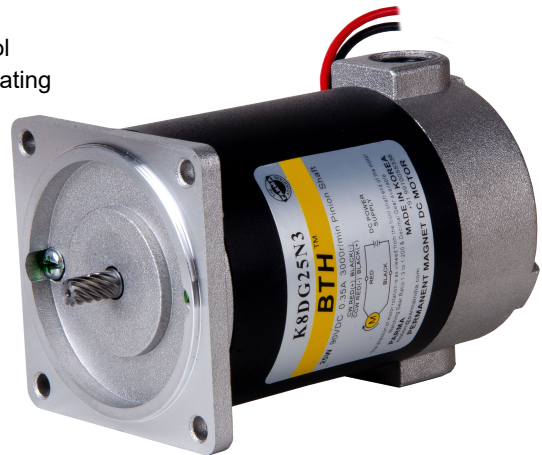


80mm Square (3.15 in.sq)

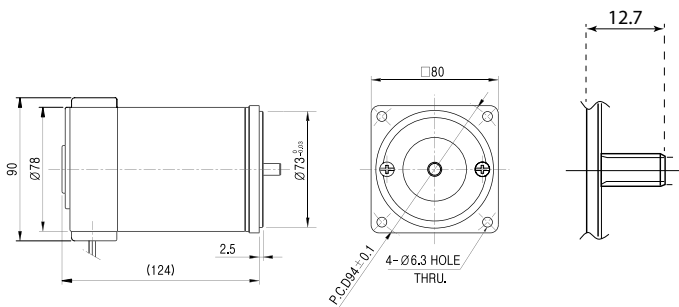
- Permanent Magnet DC Motors are the best solution to motion control and power transmission applications where compact size, wide operating speed range, ability to adapt to arrange of power.
- Their ability to produce high torque at low speed make them suitable substitutes for gearmotors in many application.
- Compare to the same size AC motor, it is easy to control the speeds and changes the rotation direction with high efficiency.



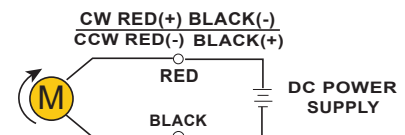
Specifications

MODEL		K8DG25N3
Voltage		90 VDC
No Load	Speed	3200 (r/min)
	Current	0.04 A
Rated Load	Output	25 W
	Speed	3000 (r/min)
	Torque	0.811 (kgf-cm)
	Current	0.35 A
Stall	Torque	21.5 (kgf-cm)
	Current(A)	10 A

Dimensions



Connection Diagram



The direction of motor rotation is as viewed from the front shaft end of the motor
Matching Gear Ratio 1:3 to 1:250 & Decimal Gear available.

Application



Industrial Machinery



Medical Equipment



Textile Machinery



ATM's



Electronic Machinery



Automatic Doors



Conveyor Belts



Agricultural Machinery

Performance Curve

