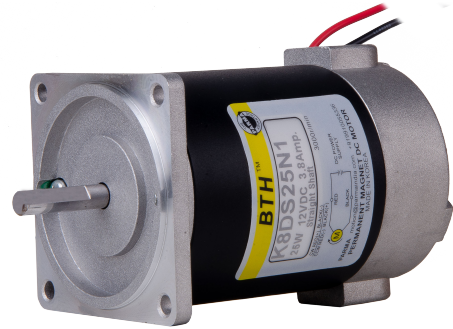


80mm Square (3.15 in.sq)

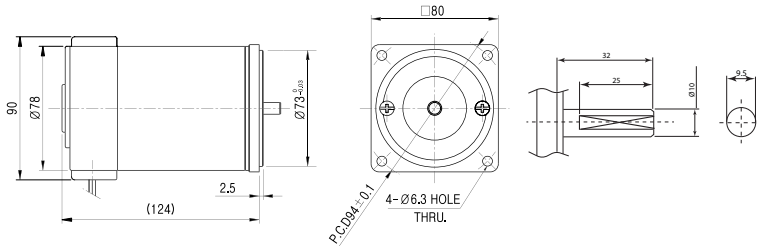
- Permanent Magnet DC Motors are the best solution to motion control and power transmission applications where compact size, wide operating speed range, ability to adapt to arrange of power.
- Their ability to produce high torque at low speed make them suitable substitutes for gearmotors in many application.
- Compare to the same size AC motor, it is easy to control the speeds and changes the rotation direction with high efficiency.



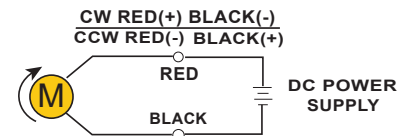
Specifications

MODEL		K8DS25N1
Voltage		12 VDC
No Load	Speed	3300 (r/min)
	Current	1.8 A
Rated Load	Output	25 W
	Speed	3100 (r/min)
	Torque	0.811 (kgf-cm)
	Current	3.3 A
Stall	Torque	15.5 (kgf-cm)
	Current(A)	48 A

Dimensions



Connection Diagram



The direction of motor rotation is as viewed from the front shaft end of the motor
Matching Gear Ratio 1:3 to 1:250 & Decimal Gear available.

Application



Performance Curve

