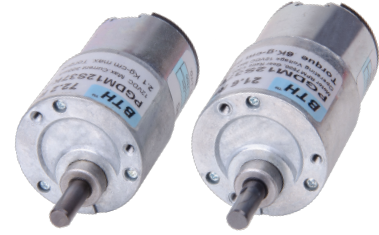
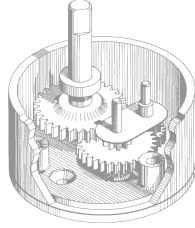


- Eccentric output shaft gearbox.
- Low noise and low current.
- Long life gearbox.



1/040~1/180

1/200~1/2430

■ **DC Geared Motor Performance Data**

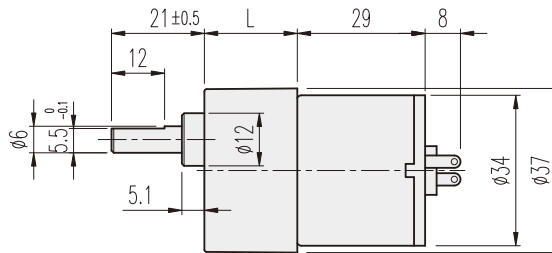
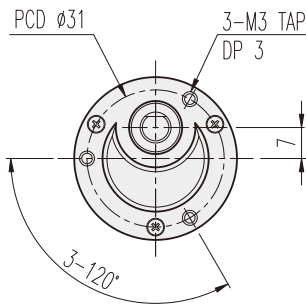
Model	Speed(rpm)	Torque(kgf-cm)	Gear Ratio	Length(mm)	Weight(gm)
PGDM-12S37K - 108.3	108.3	1.5	1/060	50	200
PGDM-12S37K - 81.2	81.2	1.9	1/083		
PGDM-12S37K - 72.2	72.2	2.1	1/090		
PGDM-12S37K - 36.1	36.1	4.2	1/180	58	210
PGDM-12S37K - 30.9	30.9	6	1/210		
PGDM-12S37K - 21.6	21.6		1/300		
PGDM-12S37K - 16.2	16.2		1/400		
PGDM-12S37K - 10.8	10.8		1/600		
PGDM-12S37K - 7.2	7.2		1/900		
PGDM-12S37K - 4	4		1/1620	62.7	220

**KD3429T1**

**Motor Specifications**

<b>Voltage</b>	12 VDC
<b>Current</b>	No Load - 150 mA, at max. efficiency - 500 mA, at stall - 3.8 A
<b>Speed</b>	No Load - 7500 (r/min), at max. efficiency 6500 (r/min)
<b>Torque</b>	At max. efficiency - 40 (gf-cm), at stall - 420 (gf-cm)
<b>Life Expectancy</b>	Life expectancy for DC geared motor is limited primarily by the life of the brushes, bearing and gearbox. Life expectancy in the range of 2000-5000 hours of operation are common. (although actual service life can vary greatly, depending on the motor design and operating current, voltage, speed and other conditions.)

■ **Dimensions**



■ **Gearhead Length**

Ratio	L
1/002~1/030	21
1/040~1/180	29
1/200~1/2430	33.7

■ **Application**

